

## Trained Installers

We at Landy Vent UK Ltd take great pride in our product range and customer service. As such all Eldfast installers are both trained and monitored to ensure only certified installers carry out your Eldfast chimney lining.

This training scheme is overseen by HETAS making it the only chimney lining system to have its own UK recognised competent person scheme.



Your local trained contractor is

Get an estimate for lining your chimney with Eldfast by visiting [www.landyvent.co.uk](http://www.landyvent.co.uk) and selecting the option to get a quote

## You may also be interested in our other product ranges



### Ecco Stove - Masonry Heaters

Manufactured in the UK and providing a whole home heating solution without the need for radiators, air ducting or electricity.

[www.eccostove.com](http://www.eccostove.com)

### **SaverSystems**

#### Saver Systems

Saver System products are imported by Landy Vent UK Ltd from the USA and provide a range of innovative solutions for chimney and stone cleaning and protection.

[www.landyvent.co.uk](http://www.landyvent.co.uk)



2 Redditch Road  
Studley  
Warwickshire  
B80 7AX

Tel: +44 1527 857 814  
Email: [sales@landyvent.co.uk](mailto:sales@landyvent.co.uk)  
Web [www.landyvent.co.uk](http://www.landyvent.co.uk)

## Certification

Eldfast has been tested to the following criteria.

**BSRIA Approved**  
BSEN 1443:2003  
PREN 1856-2 PREN 1857

**Danak Approved**  
Boverkgs 1993 - 2  
UT Gava 2

Product designations  
T600, N1, S, D3

AF5 NITT 2.6  
ISO 4746-1979  
ISO 4736-1979  
NT Fire 020

**DIBT Approved**  
**HETAS Approved**



## The Long Term Chimney Lining Solution

# Eldfast

Eldfast has been developed to meet today's strict requirements and standards and has some key characteristics that make it stand out as one of the best lining systems on the market today.

25 Year guarantee  
(even in the event of a chimney fire)

Wholly Ceramic - non corrosive.

Preserves cross section (size) of the flue

Suitable for all flue types.

50-60 year life expectancy.

Improves chimney draught.

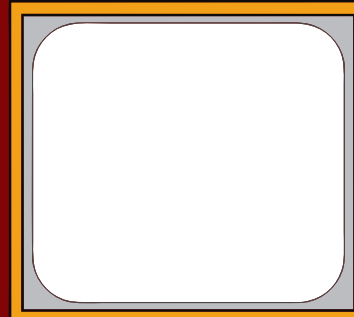
Provides structural support to the chimney.



**ELDFAST**  
Ceramic Chimney Lining System

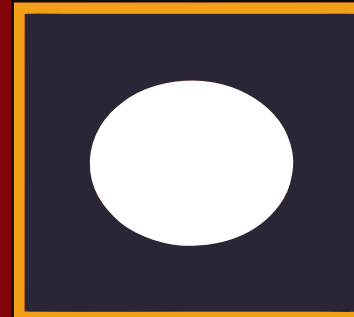
# Preserving The Cross Sectional Area

Most other chimney lining systems close down the flue thereby reducing the free venting area within the chimney. While this is less of an issue for wood burning stoves and most open and inset fires have a larger volume of air and heat to pass through the chimney and require much larger flue cross sectional area - which Eldfast satisfies.



Masonry flue (for example)

Eldfast coating  
(nominal coating 4-5mm)



Free Gas area

A traditional cast in-situ coating



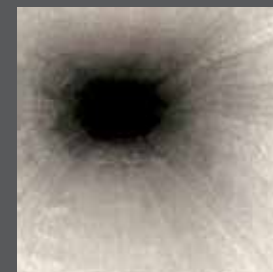
Before



After



Before



After

After lining with Eldfast you will have a chimney that is leak proof, very hard wearing, completely fireproof and gives better updraught as a consequence.

Eldfast has certification to stringent regulations provided by BSRIA (UK) and DANAK (Denmark) and DIBT (Germany) to satisfy both UK and European standards.

# Maintains Chimney Construction

As the Eldfast system is parged onto the existing chimney construction and only requires a 4-5mm coating replacing the original lime mortar parging with a more modern, hard wearing material. This makes Eldfast particularly useful for listed properties.

Eldfast has now been used for properties in the catalogues of The National Trust, Landmark Trust and many more.



# Why Chimneys Leak

Chimneys are exposed to a range of environmental factors as well as the corrosive nature of many products burned within them. As such it is important to have them inspected at least once a year by a registered chimney sweep.

Failure to have your chimney maintained can result in chimney fires, structural damage and exposure to harmful gases such as Carbon Monoxide.



# Carbon Monoxide Poisoning

Carbon monoxide poisoning is often not given the attention it deserves. An old, poorly serviced or damaged chimney can leak harmful gases into your home which can result in sickness or even death.



**DON'T TAKE A CHANCE**

Symptoms:

- Headache
- Tiredness
- Nausea
- Confusion
- Dizziness
- Stomach Pain
- Shortness of breath